

# DGTW BRAZING & PIPE WORKING EQUIPMENT



# Daegyeong Techwin

In the rapidly changing industrial environment, brazing, as a part of joining technology, closely takes a seat in parts of our daily lives, such as in automobiles, refrigeration and air conditioning, air and space industries, and has become a core of joining technology.

Daegyeong Techwin has done its best to meet the demands of customers through the development of new technology and the introduction of advanced technology. In addition, the company has established a Welding R&D Lab in order to improve productivity, quality and competitiveness. Owing to the efforts of continuous research and development for the customers, the company has been nominated as a venture company and becomes a specialized company in brazing and pipe.

In order to become a world renowned company in the brazing and pipe business, the company will create new technology by joining the Industry-Academy-Institute's research projects and developing the talent of employees, including engineers.

We will do our best for your QCD (quality, cost and delivery).

Thank you very much.

All staff members of Daegyeong Techwin Co., Ltd.

**BRAZING & PIPE WORKING EQUIPMENT**

**DGTW**



품질인증시스템  
KSA:2001  
ISO 9001:2000

## DGTW Sales Items

DT Brazing Torch .....	04
Electronic gas saver .....	06
MFC Gas Saver .....	08
Gas Flux Dispensor .....	09
Special Purpose Brazing System .....	10
Induction Auto Brazing & Soldering system .....	12
AI Tube Auto Brazing System .....	14
Line Auto Brazing System .....	16
Pipe Processing Machinery .....	18
Brazing Alloys & Flux .....	22
Cu-Pipe Product .....	24



# DT Brazing Torch



## Single Torch

Model	DT 101L	DT 101S
Length	430mm	330mm
Weight	330g	300g
Burner Tip	DT-M6	DT-M6
	DT-D8	DT-D8



## Double Torch Horizontal Type

Model	DT 102L	DT 102S
Length	430mm	330mm
Weight	370g	320g
Burner Tip	DT-M6	DT-M6



## Double Torch Vertical Type

Model	DT 103L	DT 103S
Length	430mm	380mm
Weight	390g	350g
Burner Tip	DT-M6	DT-M6



## Triple Torch

Model	DT 104L	DT 104S
Length	430mm	380mm
Weight	390g	350g
Burner Tip	DT-M6	DT-M6



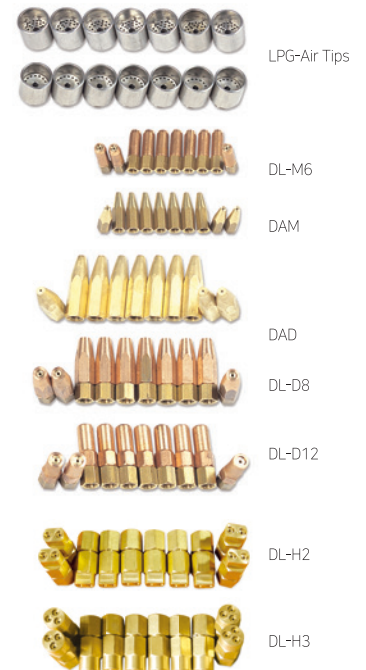
## Single Line Torch for Gas Saver

Model	Type	Tip	Angle	Refer to Drawing
DT-105A-1	Single	Middle	120°	A
DT-105A-2	Single	Mini	120°	B
DT-105A-3	Single	Mini	120°	E
DT-105A-4	Single	Mini	90°	F
DT-105A-5	Single	Middle	90°	F
DT-105B-1	Double	Mini	Horizontal	C
DT-105B-2	Double	Mini	Horizontal	G
DT-105B-3	Double	Mini	Horizontal	H
DT-105B-4	Double	Mini	Horizontal	I
DT-105B-5	Double	Mini	Horizontal	J
DT-105B-6	Double	Middle	Horizontal	C
DT-105C-1	Double	Mini	Vertical	D
DT-105D-1	Single	Mini	Flexible	K



## Burner Tips

Model	Tip Length	Tap Spec.	Hole Spec.	Remark
DL-M6	28.7mm	M6 x 1.0	Ø1.0, Ø1.0	M6 : Mini 6Cut
DL-M8			Ø1.4, Ø1.0	DL-M : LPG Mini
DL-D4	40.0mm	M8 x 1.0	Ø1.2, Ø1.4 Ø1.6, Ø1.8	D6 : Middle 6Cut DL-D : LPG Middle
DL-D6				
DL-D8				
DL-D12				
DAM	28.7mm	M6 x 1.0	Ø1.2, Ø1.4, Ø1.6	DL : LPG, LNG
DAD	40.0mm	M8 x 1.0	Ø1.2, Ø1.4, Ø1.6, Ø1.8	DA : Acety Line
DL-H2	30.0mm	M8 x 1.0	2 - Ø0.9	
DL-H3	30.0mm	M8 x 1.0	3 - Ø0.9	



# Electronic Gas Saver

## Convenience

You do not need to control torch valve during brazing and soldering.  
You have to do only ignite torch when you start work and hang up torch when you finish your work.

## Safety

Automatic stop of gas supply in case of the power failure.

## Durability

Our gas saver is free from the gas leakage, mechanical breakage and maintenance free because solenoid valves and precise electronic control devices are adopted.

## Cost Saving

DGTW gas saver saves the cost of machinery within one month for the people who do not have gas saver or have out of order gas saver and within one year for the people who have conventional mechanical gas saver.

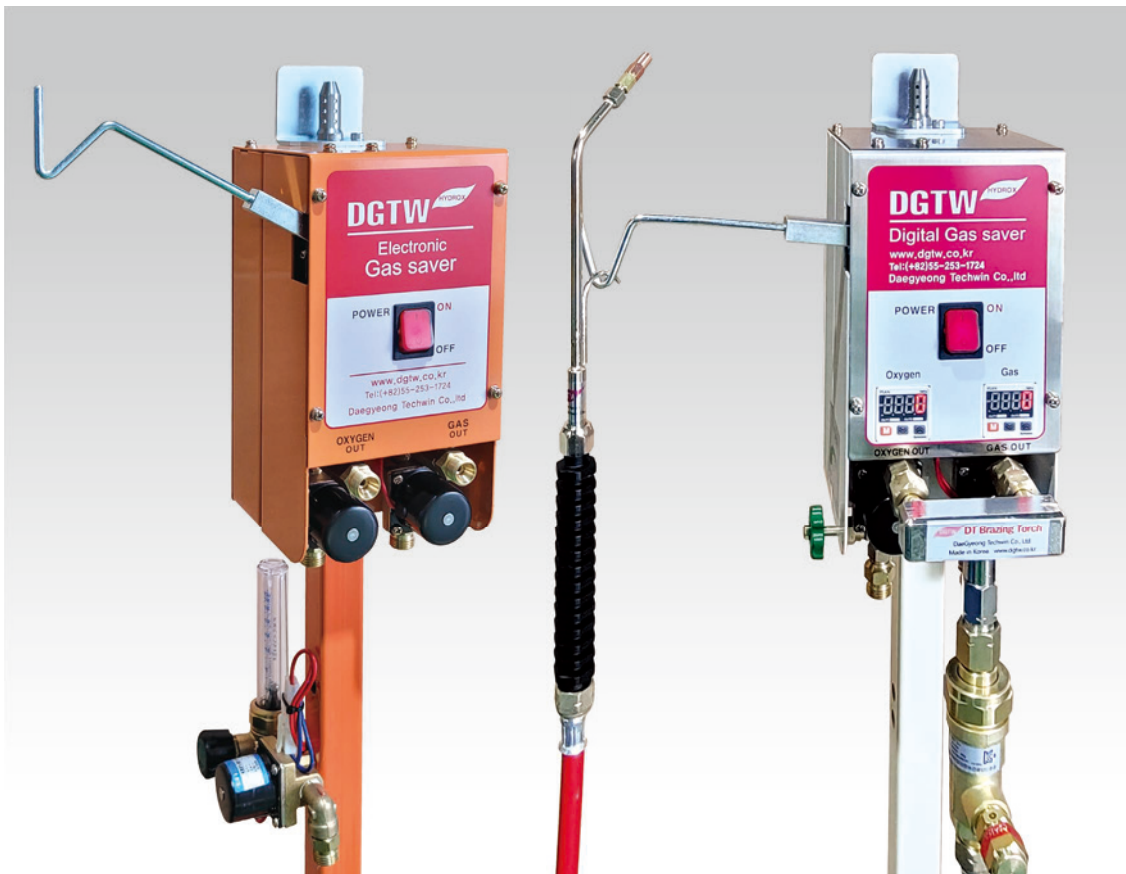
## Standardization

Digital gas saver is made for the beginners to standardize the flame by attaching digital pressure sensor.



# DGTW GAS SAVER!

It reduces cost, increases safety, and improves convenience of welding work.



TYPE	
DT-747	Oxygen, All Fuel Gas, Gas Flux application
DT-Digital	Oxygen, All Fuel Gas, Gas Flux application

※ Option - Nitrogen Gas Flow Meter

Specifications	
전원(Rated Voltage)	AC 110V, AC 220V
외형(Dimension)	135W × 140D × 245H(mm)
중량(Weight)	about 4Kg
점화방식(Ignition Type)	SPARK IGNITOR

# MFC Gas Saver

MFC gas saver can fine-tune the flow rates of oxygen and gas up to 0.01 liters per minute, and it stores 10 flames to select and use the flames you need.

The flame does not change despite changes in ambient pressure and always maintains a constant flame.

As the function is simple, anyone can use it easily, and it is possible to standardize the production, respond quickly to model changes, and allow ultra-precision welding.



TYPE	
MFC-3660B	Oxygen, LPG, LNG
MFC-3660R	Oxygen, LPG, LNG

Specifications	
Rated Voltage	AC 220V
Dimension	160W × 180D × 265H(mm)
Weight	9Kg
Ignition Type	SPARK IGNITOR



# Gas Flux Dispenser

DGTW Gas Flux Dispenser is a device used to prevent surface oxidation and to improve the weldability during the welding of brass, phosphor copper, and silver solder.

After being charged in the auxiliary tank, the flux can be replenished as often as needed, and the auxiliary tank can be removed for safety.



Model	Application	Tank Capacity	Product Height	Weight	Note
DT-100	Manual Torch, Automatic Machine	5L	640mm	18kg	
DT-500	Automatic Machine	12L	650mm	23kg	

※ Standard parts: 1 pc of Check Valve; 2 sets of Hose Connection Nipple

# Special Purpose Brazing System

Standardized work procedure.

Simple to use productivity 10–28pcs/sec.

Less post-process.

Gas flux can be usable depending on the appearance.

10

Special Purpose Brazing System



- 01 AL Auto Brazing MC
- 02 Refrigerator parts Auto Brazing MC
- 03 Automobile parts Auto Brazing MC



04 Soldering MC for S-pipe



05 AL EVA Auto Brazing MC



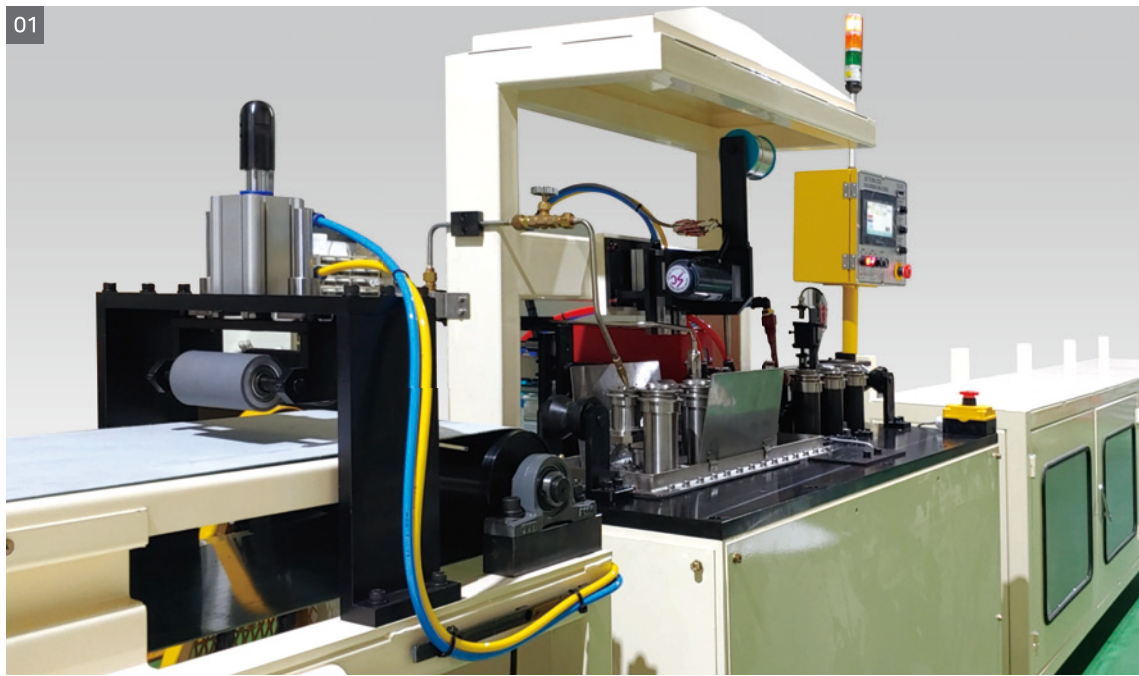
06 Service Valve Auto Brazing MC



07 Special Tool Auto Brazing MC

# Induction Auto Brazing & Soldering system

We produce it according to the specifications and sizes of various models, and it is possible to manufacture laser welding machines, too.



- 01 Suction Pipe + 2 Capillary Pipe Induction Soldering Machine
- 02 Induction Brazing Machine for Aluminum Parts of The Vettree Cooling System



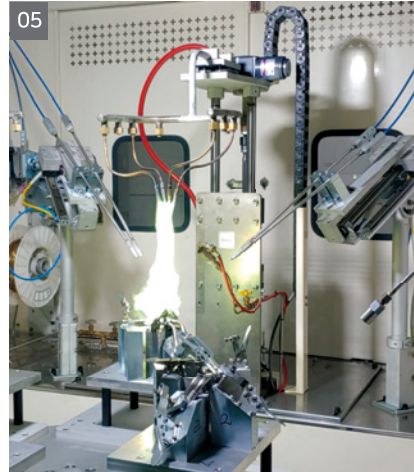
- 03 Plumbing Material Muffler Inductionautomatic Brazing Machine for Air Conditioner Installation
- 04 Brass Socket Automatic Brazing Machine
- 05 Socket Automatic Supply and Take-out System

# Al Tube Auto Brazing System

Automotive air conditioners, heater parts, fuel tanks, and automatic welding machines for steel piping parts can be custom-made.



- 01 Car Air Conditioner Aluminum Tube Brazing Machine
- 02 Car Air Conditioner Aluminum Tube Brazing Jig
- 03 Aluminum Auto Parts Brazing Machine



07

- 04 Automobile Fuel Tank Brazing Machine
- 05 Automotive Cooling Tube Automatic Brazing Machine
- 06 Copper Distributor Automatic Brazing Machine
- 07 Car Heater In Out Tube Brazing Machine

# Line Auto Brazing System

Standardized work procedures facility manager required.  
Unattended work. productivity 20-40sets/sec.  
Flux wire automatic supply.



01 H/E Heating system  
02 H/E Auto Brazing System



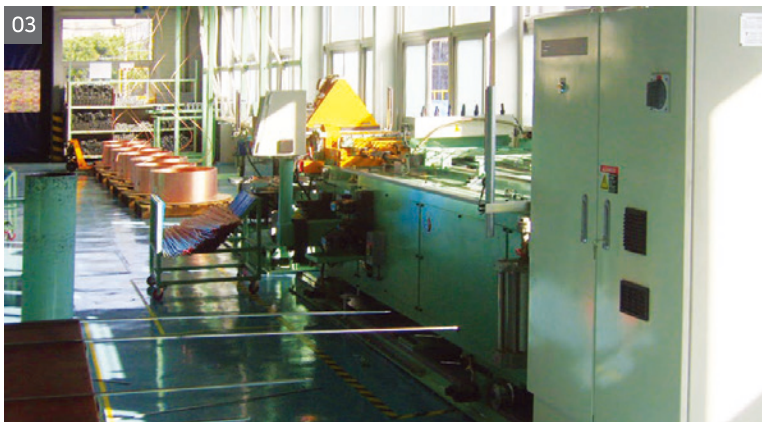




- 03 H/E Auto Brazing Line System Dry oven
- 04 Compressure Unit Brazing System
- 05 Special H/E Auto Brazing Line System

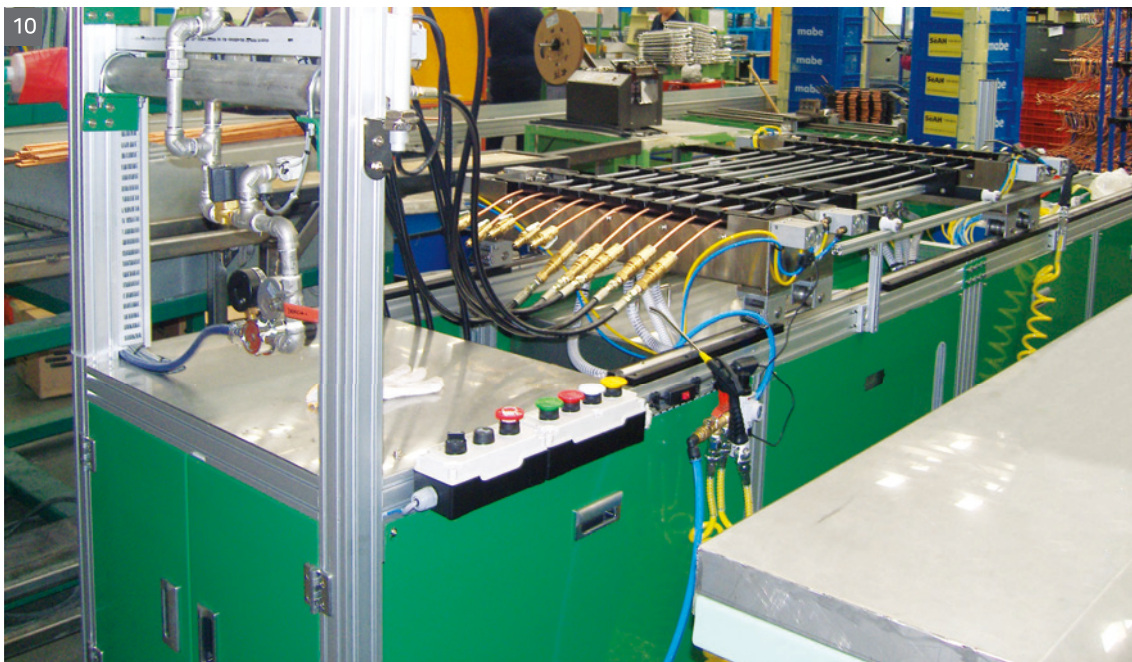
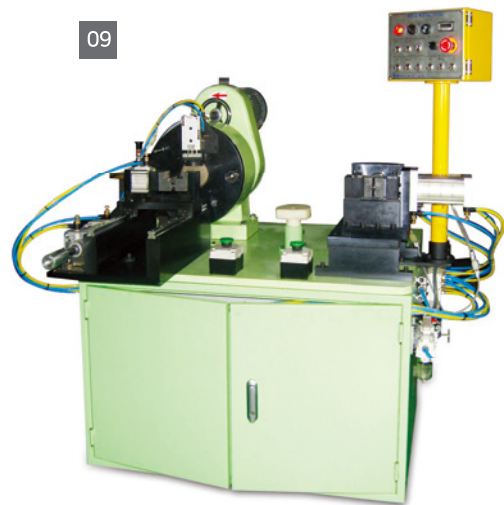
# Pipe Processing Machinery

We Manufacture Various Auto Bending, Forming, Cutting, Sigzing Equipments as Customers Requires



01 Dryer Assembly MC  
02 Dryer  
03 Hair pin Bender MC

04 3stage Expansion MC  
05 Shrinkable tube heating MC  
06 Buffing MC  
07 Buffered Parts



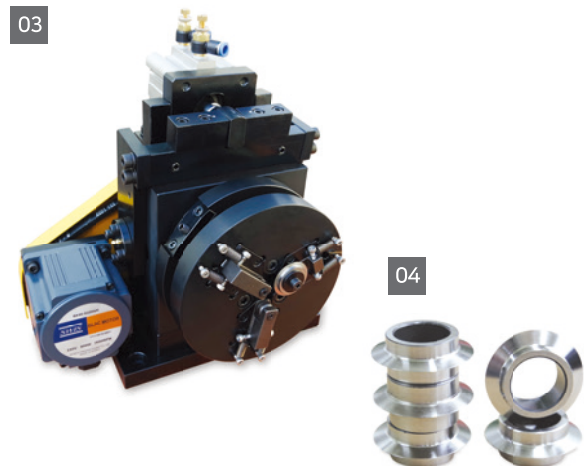
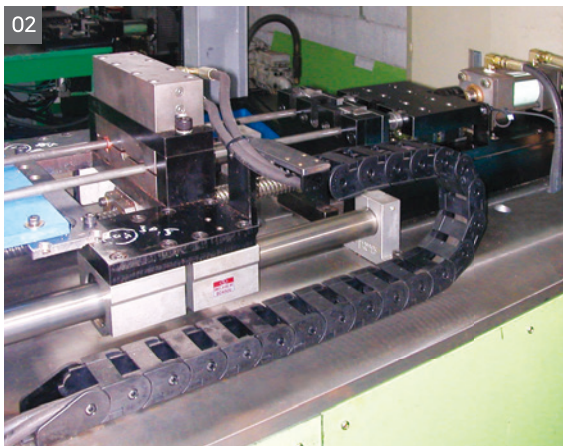
08 Auto Knife Cutting & Expansion Reducing MC

09 AL Pipe Reducing MC

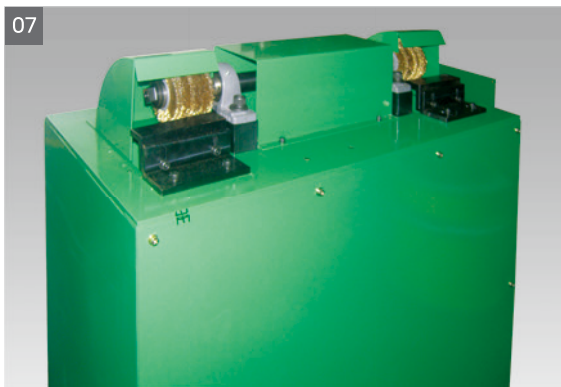
10 Pipe Leaktest MC

# Pipe Processing Machinery

We Manufacture Various Auto Bending, Forming, Cutting, Sigzing Equipments as Customers Requires



- 01 High Speed Steel Tube Cutting MC
- 02 Servo Control Tee Up MC
- 03 Pipe Cutting Machinery Head
- 04 Ring Knife



- 05 Knife Cutting MC
- 06 Knife Cutting MC
- 07 Deburring MC
- 08 Hydraulic Forming MC
- 09 Auto Both ends Reducing MC

# Brazing Alloys & Flux



## Copper Brazing Alloys

Silver Alloy	Composition(wt%)					Woring Temp (°C)	Tensile strength (kg/mm <sup>2</sup> )	Density (kg/mm <sup>3</sup> )
	Ag	Cu	P	Sn	Other			
Bcup-1	-	95	5	-	-	790~930	31.5	8.0
Bcup-2	-	93	7	-	-	735~845	29.5	8.0
Bcup-3	5	88.8	6.2	-	-	720~815	33.9	8.1
Bcup-4	6	86.8	7.2	-	-	690~790	32	8.1
Bcup-5	15	80	5	-	-	705~815	35.1	8.4
Bcup-6	2	91.2	6.8	-	-	730~815	29.8	8.1
Bup-3S	3	90.7	6.3	-	-	730~820	31.4	8.1
Bcup-2S	-	85.5	7.5	7	-	690~740	30	8.0
Bcup-3ES	2	84	7	7	-	680~730	31.6	8.1
Bcup-4S	4	87	6	3	-	670~720	35.4	8.1
Bcup-5S	6	83	7	4	-	660~710	32.2	8.0

## Silver Brazing Alloys

Silver Alloy	Composition(wt%)					Woring Temp (°C)	Tensile strength (kg/mm <sup>2</sup> )	Density (kg/mm <sup>3</sup> )
	Ag	Cu	Zn	Cd	Other			
BAG-1	44~46	14~16	14~18	23~25	-	605~620	45~50	9.3
BAG-1A	49~51	14.5~16.5	14.5~18.5	17~19	-	625~635	50~60	9.4
BAG-2	34~36	25~27	19~23	17~19	-	605~700	35~40	9.1
BAG-3	49~51	14.5~16.5	13.5~17.5	15~17	Ni2.5~3.5	630~690	45~55	9.5
SBA40	39~41	15~18	15~19	25~27	-	595~630	45~50	8.8
SBA30	29~31	27~29	19~23	20~23	-	600~690	38~47	9.2
SBA25	24~26	34~36	20~24	17~19	-	605~710	36~38	8.9
SBA20	19~21	38~42	23~27	14~16	-	605~760	35~43	8.8
SBA15	14~16	44~46	32~34	45~65	-	660~800	35~42	8.6
SBA13	12~14	46~48	33~35	45~75	-	675~815	35~70	8.5
SBA10	9~11	48~51	34~36	4~7	-	720~780	34~40	8.1
SBA-9	8~10	49~52	35~37	3~5	-	750~850	34~40	8.1

## Copper Based Brazing Alloys

Alloy	Composition(wt%)						Woring Temp (°C)	Applications
	Cu	Zn	Sn	Fe	Ni	Other		
BCuZn-3 (Brass Alloy)	58~60	Remainder	0.8	0.25	0.5~1	-	890~925	Steel, Copper, Copper Alloy
C5212W (Phosphor Bronze)	Remainder	-	7.0~9.0	-	-	P0.03~0.35	1,030	Steel, Copper, Copper Alloy For Furnace Brazing

## Cadmium Free Silver Brazing Alloy

Silver Alloy	Composition(wt%)					Woring Temp (°C)	Tensil strength (kg/mm)	Density (kg/mm)
	Ag	Cu	Zn	Cd	Other			
BAG-4	39~41	29~31	26~30	-	-	670~780	45~50	8.8
BAG-5	44~46	29~31	23~27	-	-	675~745	45~50	9.2
BAG-6	49~51	23~35	14~18	-	-	690~775	45~50	9.4
BAG-7	54~56	21~23	15~19	-	Sn4.5~5.5	620~650	50~60	9.1
BAG-8	71~73	27~29	-	-	-	780~851	55~65	10.1
SBA12	11~13	50~52	35~39	-	-	780~830	35~43	8.2
SBA-6	5~7	54~56	37~41	-	-	790~850	34~40	8.1

## Aluminum Brazing Alloys

Alloy	Composition(wt%)										Approximate Melting Range
	Si	Fe	Cu	Mn	Mg	Cr	Zn	Ti	Other	Ai	
4043	4.5~6.0	0.8	0.3	0.05	0.05	-	0.1	0.2	0.2	Remainder	573~631
4047	11.0~13	0.8	0.3	0.1	0.1	-	0.2	-	0.2	Remainder	576~581
5356	0.25	0.4	0.1	0.05~0.2	4.5~5.5	0.05~0.2	0.1	0.06~0.2	0.2	Remainder	570~634

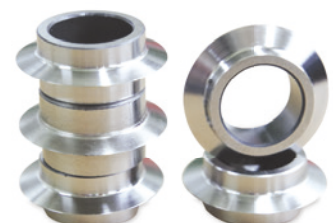
## Brazing Fluxes

Items		Application	Characteristic
Low Temp Flux		Copper, Bronz, Stainless, Nickel	Cream type 600°C~870°C
High Temp Flux		Copper, Stainless, Steel	Cream type 600°C~950°C
Coppor Flux		Copper, Bronz	Cream type 550°C~800°C
Handy	D	Copper, Bronz, Stainless,	Low particle size, low temperature, suitable for automatic brazing.
	B-1	Stainless, Carbide, Chrome Carbide	Brown cream type 600-925. It is suitable for high temperature.
	B-111	Fe Based, Non Fe based	For automation, 525-900.
	TEC	For High Temperature Soldering	Widely used in special soldering.
Sure-flo		Copper, Bronz, Fe Based	Widely used as manual, automatic, general purpose.
TB-500		Aluminum	power type chloride based. Corrosive.
AMCO33		Aluminum	Power type manuel, Automatic.
AMCO446		Aluminum	For furnace brazing, Chloride based.
Gas Flux		Copper, Bronz, Steel	Used in combination with fuel gas.



## Ring Knife

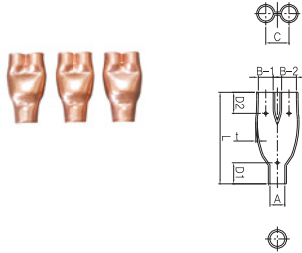
Knife spec.	For copper tube	For steel tube
I.D	Φ19	Φ23
O.D	Φ35	Φ13
Knife width	6.3mm	12mm
Knife angle	27°	44°



# Cu-Pipe Product

## Coupling (2 Hole)

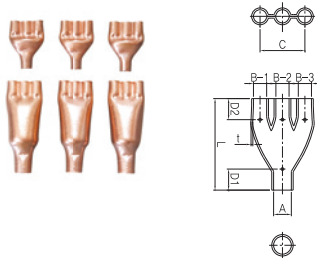
(단위 mm)



Model	Pipe Spec.		L	In		Out			C
	OD	T		A	D1	B-1	B-2	D2	
0895A	12.7	0.8	40	5	10	5	5	10	8
0895C	12.7	0.8	40	6.5	10	5	5	10	8
0895B	12.7	0.8	40	8.1	10	5	5	10	8
2716A	15.88	0.95	40	6.5	10	6.5	6.5	10	11
2716A-0.8	15.88	0.8	40	6.5	10	6.5	6.5	10	11
2717A	15.88	0.95	40	9.7	10	6.5	6.5	10	11
2717C	15.88	0.95	40	8.1	10	6.5	6.5	10	11
2717C-0.8	15.88	0.8	40	8.2	10	6.5	6.5	10	11
1192G-TS	19.05	0.8	45	8.1	10	6.5	6.5	10	12
1192B	22.2	1.15	50	9.7	10	9.7	9.7	10	14
1192D	22.2	1.15	50	12.9	10	9.7	9.7	10	14
1192F	22.2	1.15	50	8.1	10	9.7	9.7	10	14
1192G	22.2	1.15	50	8.1	10	8.1	8.1	10	14

## Coupling (3 Hole)

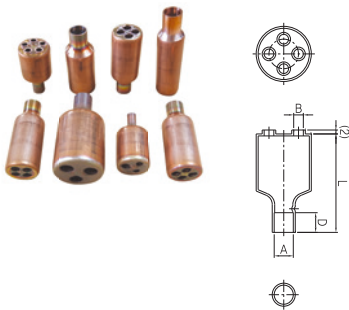
(단위 mm)



Model	Pipe Spec.		L	In		Out			C
	OD	T		A	D1	B-1	B-2	D2	
30329E	22.2	1.15	73	6.5	10	6.5	6.5	10	20
30329H	22.2	1.15	73	8.1	10	6.5	6.5	10	20
30329D	22.2	1.15	73	9.7	10	6.5	6.5	10	20
30329G	22.2	1.15	73	12.9	10	6.5	6.5	10	20
30175A	31.75	1.25	50	12.9	10	12.9	12.9	10	28

## Distributor

(단위 mm)



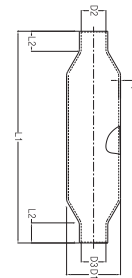
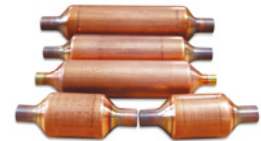
Model	Pipe Spec.		L	In		Out		Remark
	OD	T		A	D1	N (Hole)	B	
21174D	22.2	1.15	50	6.5	10	4	5	
21174A	22.2	1.15	50	8.1	10	3	5	
21174B	22.2	1.15	50	9.7	10	2	5	
21174C	22.2	1.15	50	9.7	10	3	5	
70301	22.2	1.15	82	12.9	10	5	4.9	
8401	25.4	1.15	50	4.9	10	2	4.9	
						1	6.5	
8402	25.4	1.15	50	4.9	10	1	4.9	
						1	6.5	
8403	25.4	1.15	50	4.9	10	3	6.5	
8404	25.4	1.15	50	4.9	10	2	6.5	
2836A	25.4	1.15	50	9.7	10	4	5	
2836C	25.4	1.15	50	9.7	10	3	5	
33903	25.4	1.15	51.5	9.7	10	3	6.5	
33904	25.4	1.15	51.5	12.9	10	3	6.5	
66901	25.4	1.15	58	9.7	10	6	5.1	
33901	25.4	1.15	65	9.7	10	4	6.5	
33902	25.4	1.15	65	12.9	10	4	6.5	
3395F	28	1.25	50	6.5	10	5	5	
2836D	28	1.25	50	9.7	10	2	5	
2836E	28	1.25	50	9.7	10	3	5	
2836F	28	1.25	50	9.7	10	4	5	
3395A	28	1.25	50	9.7	10	5	5	
3395E	28	1.25	50	9.7	10	4	5	
20720S	38	1.45	60	9.7	10	7	3.4	
20720U	38	1.45	60	9.7	10	7	2.8	
2531Z	38	1.45	60	12.9	10	8	3.4	
21174G	38	1.45	73	12.9	10	3	9.7	
21174N	38	1.45	73	16	10	3	9.7	



## Muffler

(단위 mm)

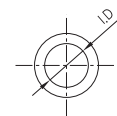
Model	Pipe Spec.		L	In		Out		Remark
	OD	T		A	D1	B	D2	
20010B	19.05	0.95	80	6.5	10	6.5	10	Screen / Silence
20010F	19.05	0.95	80	6.5	10	8.1	10	Screen / Silence
20010A	19.05	0.95	80	9.7	10	9.7	10	Screen / Silence
20010C	19.05	0.95	80	9.7	10	8.1	10	Screen / Silence
20010D	19.05	0.95	80	9.7	10	6.5	10	Screen / Silence
902801	28	1.15	90	8.1	10	8.1	10	
30003U	31.75	1.25	85	9.7	10	9.7	10	
30003D	31.75	1.25	102	8.1	10	8.1	10	
30004E	31.75	1.25	102	9.7	Thru	8.2	10	
30003K	31.75	1.25	102	9.7	Thru	9.7	10	
30003L	31.75	1.25	102	9.7	10	9.7	10	
30003H	31.75	1.25	105	9.7	Thru	6.4	10	
232K	31.75	1.25	140	12.9	10	12.9	10	
01354C	31.75	0.8	145	8.2	8	8.6	Thru	
01354E	31.75	0.8	145	8.2	8	7.5	Thru	
232S	31.75	1.25	150	9.7	10	9.7	10	
30003C	31.75	1.25	150	9.7	Thru	9.7	10	
30003J	31.75	1.25	150	9.7	10	9.7	10	
923001	31.75	1.25	150	9.7	Thru	9.7	10	
232B	31.75	1.25	150	12.9	Thru	12.9	10	
30003A	31.75	1.25	150	12.9	Thru	9.7	10	
30003B	31.75	1.25	150	12.9	Thru	12.9	10	
30003N	31.75	1.25	150	16.1	Thru	12.9	10	
232D	31.75	1.25	150	16.5	10	12.9	10	
232E	31.75	1.25	155	12.9	10	13.8	Thru	
232V	31.75	1.25	155	12.9	Thru	13.8	Thru	
30002C	31.75	1.25	168	9.7	10	9.7	10	
30002E	31.75	1.25	168	9.7	10	12.9	10	
30002D	31.75	1.25	168	12.9	10	12.9	10	
30002A	31.75	1.25	168	16.1	10	12.9	10	
30002B	31.75	1.25	168	16.1	10	16.1	10	
84A	31.75	1.25	178	9.7	Thru	9.7	10	
2801	31.75	1.25	178	9.7	10	9.7	10	
84B	31.75	1.25	178	12.9	10	12.9	10	
84C	31.75	1.25	178	12.9	10	9.7	10	
232M	38	1.45	150	12.9	10	12.9	10	
30003M	38	1.45	150	12.9	Thru	12.9	10	
232H	38	1.45	150	13.8	Thru	12.9	10	
30003R	38	1.45	170	12.9	10	12.9	10	
30003S	38	1.45	210	9.7	Thru	9.7	10	



## Brazing Ring

(단위 mm)

Model	Wire	Ring	Remark
	OD	ID	
16690	1.6	6.9	
16794	1.6	7.94	
16942	1.6	9.42	
18942	1.8	9.42	



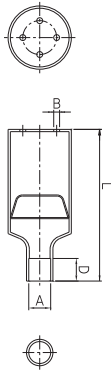
## Return Bend

(단위 mm)

Model	Pipe Spec.		C	P	H	Remark
	OD	T				
741A	7	0.41	7	21	20	
741B	7	0.41	7	19	20	
952A	9.52	0.5	9.52	22.88	22.6	
952B	9.52	0.5	9.52	25.4	24	



# Cu-Pipe Product



## Distributor (Insert Screen type)

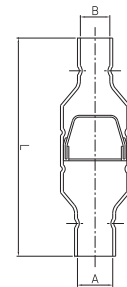
(단위 mm)

Model	Pipe Spec.		L	In		Out		Remark
	OD	T		A	D1	B	D2	
37801	25.4	1.15	50	9.7	10	2	4.9	Screen
351K	25.4	1.15	60	6.5	10	5	2.8	Screen
351L	25.4	1.15	60	6.5	10	4	2.8	Screen
351M	25.4	1.15	60	6.5	10	3	2.8	Screen
351P	25.4	1.15	60	6.5	10	5	3.4	Screen
351T	25.4	1.15	60	6.5	10	6	2.8	Screen
351Y	25.4	1.15	60	6.5	10	3	3.4	Screen
9203	25.4	1.15	60	6.5	10	7	3.4	Screen
351C	25.4	1.15	60	8.1	10	4	2.7	Screen
351A	25.4	1.15	60	9.7	10	5	2.8	Screen
351D	25.4	1.15	60	9.7	10	6	2.8	Screen
351E	25.4	1.15	60	9.7	10	3	2.8	Screen
351F	25.4	1.15	60	9.7	10	2	3.4	Screen
351N	25.4	1.15	60	9.7	10	4	5	Screen
351Q	25.4	1.15	60	9.7	10	5	4.2	Screen
351U	25.4	1.15	60	9.7	10	4	3.4	Screen
351X	25.4	1.15	60	9.7	10	3	3.4	Screen
351Z	25.4	1.15	60	9.7	10	5	3.4	Screen
20720B	25.4	1.15	60	9.7	10	9	2.8	Screen
20720G	25.4	1.15	60	9.7	10	3	3.4	Screen
20720N	25.4	1.15	60	9.7	10	8	3.4	Screen
20720Y	25.4	1.15	60	9.7	10	6	2.8	Screen
20720Z	25.4	1.15	60	9.7	10	8	3.4	Screen
9204	25.4	1.15	60	9.7	10	6	3.4	Screen
20720Q	25.4	1.15	60	12.9	10	8	2.8	Screen
24150A	25.4	1.15	65	6.5	10	6	3.4	Screen
20720A	38	1.45	85	9.7	10	10	3.4	Screen
20720D	38	1.45	85	9.7	10	8	3.4	Screen
20720K	38	1.45	85	9.7	10	8	4.2	Screen
20720R	38	1.45	85	9.7	10	9	3.4	Screen
20720T	38	1.45	85	9.7	10	11	3.4	Screen
20720X	38	1.45	85	9.7	10	11	2.8	Screen
213M	38	1.45	105	9.7	10	6	4.2	Screen
213Y	38	1.45	105	9.7	10	12	3.4	Screen
2531C	38	1.45	105	9.7	10	6	2.8	Screen
2531E	38	1.45	105	9.7	10	5	3.4	Screen
2531K	38	1.45	105	9.7	10	6	2.8	Screen
2531P	38	1.45	105	9.7	10	6	3.4	Screen
2531U	38	1.45	105	9.7	10	6	4.2	Screen
2531X	38	1.45	105	9.7	10	7	4.2	Screen
2531Y	38	1.45	105	9.7	10	8	4.2	Screen
213B	38	1.45	105	11.6	10	10	2.8	Screen
213F	38	1.45	105	11.6	10	12	2.8	Screen
929A	38	1.45	105	11.6	Thru	9	2.8	Screen
929B	38	1.45	105	11.6	Thru	8	2.8	Screen
929H	38	1.45	105	11.6	Thru	10	3.4	Screen
929J	38	1.45	105	11.6	Thru	8	3.4	Screen
929K	38	1.45	105	11.6	Thru	5	3.4	Screen
929L	38	1.45	105	11.6	Thru	12	3.4	Screen
213H	38	1.45	105	12.9	Thru	15	3.4	Screen
213J	38	1.45	105	12.9	Thru	10	3.4	Screen
213X	38	1.45	105	12.9	10	12	2.8	Screen
2531H	38	1.45	105	12.9	10	7	2.8	Screen
2531R	38	1.45	105	12.9	10	6	3.4	Screen
2531T	38	1.45	105	12.9	10	7	3.4	Screen
23409B	38	1.45	105	12.9	10	8	4.2	Screen
23409D	38	1.45	105	12.9	10	9	3.4	Screen
23409E	38	1.45	105	12.9	10	8	3.4	Screen
3394A	38	1.45	105	12.9	10	15	2.8	Screen
21174E	38	1.45	140.5	9.7	Thru	2	9.7	Screen

## Strainer

(단위 mm)

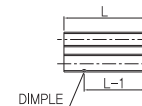
Model	Pipe Spec.		L	In		Out		Remark
	OD	T		A	D1	B	D2	
3659L	19.05	0.95	60	6.5	10	6.5	10	Screen
3659W	19.05	0.95	60	6.5	10	8.1	10	Screen
1301	19.05	0.95	60	7.5	Thru	6.5	10	Screen
3659C	19.05	0.95	60	9.7	10	8.1	10	Screen
3659M	19.05	0.95	60	9.7	10	9.7	10	Screen
1302	19.05	0.95	60	9.7	10	11.1	Thru	Screen
1303	19.05	0.95	60	9.7	Thru	6.5	10	Screen
20005G	19.05	0.95	60	12.9	10	12.9	10	Screen
20002V	19.05	0.95	85	9.7	10	8.1	10	Screen
20002W	19.05	0.95	95	16	10	16	10	Screen
3659X	25.4	1.15	60	9.7	10	9.7	10	Screen
3659N	25.4	1.15	60	12.9	10	12.9	10	Screen
3659R	25.4	1.15	65	10.7	Thru	12.9	10	Screen
3659Q	25.4	1.15	65	12.9	10	9.7	10	Screen
20002C	25.4	1.15	70	12.9	10	12.9	10	Screen
						9.7	10	(Coupling)
3659U	25.4	1.15	85	6.5	10	12.9	10	Screen
3659V	25.4	1.15	85	6.5	10	9.7	10	Screen
20002J	25.4	1.15	85	8.1	10	12.9	10	Screen
20002Q	25.4	1.15	85	8.1	10	9.7	10	Screen
20002U	25.4	1.15	85	9.7	10	9.7	10	Screen
20002T	25.4	1.15	85	12.9	10	12.9	10	Screen
20001A	25.4	1.15	85	12.9	10	9.7	10	Screen
20002A	25.4	1.15	85	17	10	19.2	10	Screen
20005N	25.4	1.15	114	12.9	10	12.9	10	Screen
20005M	25.4	1.15	114	12.9	10	8.1	10	Screen
20005L	25.4	1.15	114	8.6	10	6.5	10	Screen
20002D	25.4	1.15	85	12.9	10	12.9	10	Screen
4409	31.75	1.25	108	9.7	Thru	6.5	Thru	Screen
GS0952	31.75	0.8	115	9.7	10	9.7	10	Screen
GS1270	31.75	0.8	115	12.9	10	12.9	10	Screen
GS1588	31.75	0.8	115	16.1	10	16.1	10	Screen
20002H	38	1.45	95	28.1	13	28.1	13	Screen
GS1905	38	1	150	19.2	10	19.2	10	Screen
GS2222	38	1	150	22.4	10	22.4	10	Screen
20002P	38	1.45	150	28.2	15	28.2	15	Screen
20005D	38	1.45	170	12.9	15	12.9	15	Screen
20005Y	38	1.45	170	16.1	15	16.1	15	Screen
20005E	38	1.45	170	19.2	15	19.2	15	Screen
20005F	38	1.45	170	22.4	15	22.5	15	Screen
20005A	38	1.45	170	28.2	15	28.2	15	Screen
20005P	38	1.45	170	31.9	15	31.9	15	Screen
1701	38	1.45	170	23	25	22.3	12	Screen
1702	38	1.45	170	23	25	28.1	12	Screen
36978	41.3	1.45	120	16.05	10	16.05	10	Screen



## Sensor Holder

(단위 mm)

Model	Pipe Spec.		L	L-1	ID	Remark
	OD	T				
1037B	12.7	0.8	36	27	7.3	
1037D	12.7	0.8	36	27	6.5	
1037H	12.7	0.8	36	27	5.3	



## Sensor Holder (Insert Clip)

(단위 mm)

Model	Pipe Spec.		L	ID	Remark
	OD	T			
22409A	7.7	0.7	26.5	6.3	
22409B	9.6	0.7	27	8.2	
22409C	8.6	0.7	27	7.2	



We will put our continuous Efforts for your productivity improvement  
quality improvement defect ratio decroment.



Printed in October 2022



BRAZING & PIPE WORKING EQUIPMENT

**Daegyeong Techwin. Co.,LTD**

18, Paryong-ro 346beon-gil, Uichang-gu, Changwon-si, Gyeongsangnam-do, Korea

Tel : +82-55-253-1724 / Fax : +82-55-253-1723

E-mail : [dgtw747@daum.net](mailto:dgtw747@daum.net)

<http://www.dgtw.co.kr>